

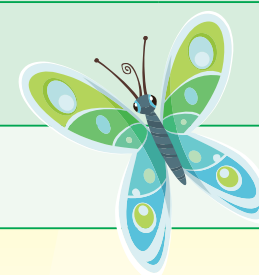


Mathseeds Lessons and the NSW Syllabus



EARLY STAGE 1

Strand	Substrands	Outcomes	Code	Mathseeds Lesson #			Additional Mathseeds Resources	
				Knowledge and Skills	Assessment	Higher Order Thinking Skills	Fluency	Assessment
				Online Lesson, Printable Resources, & Problem Solving Tasks	End-of-lesson Quiz	Critical Thinking and Problem Solving Interactives	Driving Tests (DT) Mental Minute (MM)	Printable Achievement Standards Assessment
Number and algebra	Representing whole numbers	Demonstrates an understanding of how whole numbers indicate quantity. Reads numerals and represents whole numbers to at least 20.	MAE-RWN-01 MAE-RWN-02	1, 2, 3, 5, 7, 10, 11, 12, 14, 16, 17, 18, 19, 20, 21, 22, 25, 28, 31, 33, 41, 43, 45, 46, 48, 50		12, 19, 41	DT Early Number 1-25	Kindergarten Number Tests 1-6
	Combining and separating quantities	Reasons about number relations to model addition and subtraction by combining and separating, and comparing collections. Represents the relations between the parts that form the whole, with numbers up to 10.	MAE-CSQ-01 MAE-CSQ-02	24, 30, 32, 34, 36, 40, 47, 49		30, 34, 36, 40, 43, 47	DT Early Operations 1-7, 9-20, 22-25 MM Addition Sprints MM Subtraction Sprints	Kindergarten Operations Tests 1-4
	Forming groups	Recognises, describes and continues repeating patterns. Forms equal groups by sharing and counting collections of objects.	MAE-FG-01 MAE-FG-02	8, 27, 37		6, 8, 15, 23, 27, 31, 37, 38, 40, 46	DT Early Operations 8, 21 DT Early Patterns 1-9	Kindergarten Number Test 6
Measurement and space	Geometric measure: Position	Describe position and gives and follows simple directions.	MAE-GM-01	57, 63		57, 63	DT Early Geometry 9-11, 13, 14	Kindergarten Geometry Tests 5 & 6
	Geometric measure: Length	Describes and compares lengths. Identifies half the length and the halfway point.	MAE-GM-02 MAE-GM-03	26			DT Early Measurement 5, 6, 9, 10	Kindergarten Measurement Test 1 & 2
	Two dimensional spatial structure: 2D Shapes	Sorts, describes, names and makes two-dimensional shapes, including triangles, circles, squares and rectangles.	MAE-2DS-01	4, 6, 9, 15, 23		6, 15, 23	DT Early Geometry 1-8, 12, 19, 20	Kindergarten Geometry Tests 1, 3 & 4
	Two dimensional spatial structure: Area	Describes and compares areas of similar shapes.	MAE-2DS-02	13			DT Early Measurement 2, 3	Kindergarten Measurement Test 3
	Three dimensional spatial structure: 3D objects	Manipulates, describes and sorts three-dimensional objects	MAE-3DS-01	35, 44			DT Early Geometry 15-23	Kindergarten Geometry Tests 2 & 3
	Three dimensional spatial structure: Volume	Describes and compares volumes.	MAE-3DS-02	38			DT Early Measurement 15, 16, 20	Kindergarten Measurement Test 5
	Non-spatial measure: Mass	Describes and compares the masses of objects.	MAE-NSM-01	29			DT Early Measurement 7, 8, 11, 12	Kindergarten Measurement Test 4
	Non-spatial measure: Time	Sequences events and reads hour time on clocks.	MAE-NSM-02	39, 42			DT Early Measurement 1, 4, 13, 14, 17-19	Kindergarten Measurement Tests 6 & 7
Statsics and Probability	Data	Contributes to collecting data and interprets data displays made from objects.	MAE-DATA-01				DT Early Data 1-10	Kindergarten Data Tests 1 & 2





Mathseeds Lessons and the NSW Syllabus



STAGE 1 – YEAR 1

Strand	Substrands	Outcomes	Code	Mathseeds Lesson #			Additional Mathseeds Resources	
				Knowledge and Skills	Assessment	Higher Order Thinking Skills	Fluency	Assessment
				Online Lesson, Printable Resources, & Problem Solving Tasks	End-of-lesson Quiz	Critical Thinking and Problem Solving Interactives	Driving Tests (DT) Mental Minute (MM)	Printable Achievement Standards Assessment
Number and Algebra	Representing whole numbers A	Applies an understanding of place value and the role of zero to read, write and order two-and three-digit numbers Reasons about representations of whole numbers to 1000, partitioning numbers to use and record quantity values.	MA1-RWN-01 MA1-RWN-02	56, 60, 67, 75, 77, 79, 81, 86, 88, 90, 108, 129		60, 67, 79, 81, 88, 95, 98	DT Year 1 Number 1-24	Year 1 Number and Algebra: Whole Numbers Test 1-9 Year 1 Number and Algebra: Place Value Test 1-6
	Combining and separating quantities A	Uses number bonds and the relationship between addition and subtraction to solve problems involving partitioning.	MA1-CSQ-01	51, 53, 58, 65, 68, 72, 76, 85, 88, 91, 92, 93, 95, 96, 98, 100		51, 53, 56, 65, 67, 68, 75, 76, 82, 83, 85, 88, 91, 93, 95, 96, 100	DT Year 1 Operations 1-20 MM Addition Sprints MM Subtraction Sprints	Year 1 Number and Algebra: Operations Test 1-6
	Forming groups A	Uses the structure of equal groups to solve multiplication problems, and shares or groups to solve division problems.	MA1-FG-01	61, 66, 71, 74, 77, 79, 90, 117, 133, 137		63, 71, 72, 74, 77, 79, 87, 101, 117 133, 137	DT Year 1 Operations 1-14	Year 1 Number and Algebra: Fractions and Money Test 1-3, 7
Measurement and Space	Geometric measure A: Position	Represents and describes the positions of objects in familiar locations.	MA1-GM-01	78, 94		78, 94	DT Year 1 Geometry 4, 5, 11, 12, 14-16	Year 1 Geometry: Shape Test 7, 8
	Geometric measure A: Length	Measures, records, compares and estimates lengths and distances using uniform informal units, as well as metres and centimetres. Creates and recognises halves, quarters and eighths as part measures of a whole length.	MA1-GM-02 MA1-GM-03	55, 84			DT Year 1 Measurement 2, 4, 13, 14	Year 1 Measurement: Length and Capacity Test 1-5
	Two-dimensional spatial structure A: 2D shapes	Recognises, describes and represents shapes including quadrilaterals and other common polygons.	MA1-2DS-01	52, 119, 145		52, 145	DT Year 1 Geometry 1-3, 6, 9, 10, 13	Year 1 Geometry: Shape Test 1, 2, 5, 6
	Two-dimensional spatial structure A: Area	Measures and compares areas using uniform informal units in rows and columns.	MA1-2DS-02	59		59		
	Three-dimensional spatial structure A: 3D objects	Recognises, describes and represents familiar three-dimensional objects.	MA1-3DS-01	62, 99		62	DT Year 1 Geometry 7, 8, 17, 19	Year 1 Geometry: Shape Test 3-5
	Three-dimensional spatial structure A: Volume	Measures, records, compares and estimates internal volumes (capacities) and volumes using uniform informal units.	MA1-3DS-02	89			DT Year 1 Measurement 11, 17-19	Year 1 Measurement: Length and Capacity Test 6, 7
	Non-spatial measure A: Mass	Measures, records, and compares and estimates the masses of objects using uniform informal units.	MA1-NSM-01	73				
Statistics and Probability	Data A	Gathers and organises data, displays data in lists, tables and picture graphs. Reasons about representations of data to describe and interpret the results.	MA1-DATA-01 MA1-DATA-02	80, 97		80	DT Year 1 Data 1-4, 9, 10, 12-16	Year 1 Statistics: Data Test 1-5
	Chance A	Recognises and describes the element of chance in everyday events.	MA1-CHAN-01	82			DT Year 1 Data 5-8, 11	Year 1 Statistics: Data Test 6





Mathseeds Lessons and the NSW Syllabus



STAGE 1 – YEAR 2

Strand	Substrands	Outcomes	Code	Mathseeds Lesson #			Additional Mathseeds Resources	
				Knowledge and Skills	Assessment	Higher Order Thinking Skills	Fluency	Assessment
				Online Lesson, Printable Resources, & Problem Solving Tasks	End-of-lesson Quiz	Critical Thinking and Problem Solving Interactives	Driving Tests (DT) Mental Minute (MM)	Printable Achievement Standards Assessment
Number and Algebra	Representing whole numbers B	Applies an understanding of place value and the role of zero to read, write and order two-and three-digit numbers. Reasons about representations of whole numbers to 1000, partitioning numbers to use and record quantity values.	MA1-RWN-01 MA1-RWN-02	101, 105, 106		105, 106, 108, 117	DT Year 2 Number 1-24	Year 1 Number and Algebra: Patterns Test 1-7 Year 2 Number and Algebra: Numbers to 1000 Test 1-7 Year 2 Number and Algebra: Number Patterns Test 1-8
	Combining and separating quantities B	Uses number bonds and relationship between addition and subtraction to solve problems involving partitioning.	MA1-CSQ-01	103, 110, 118, 120, 124, 128, 131, 134, 139, 142, 150		110, 113, 118, 120, 124, 125, 128, 130, 131, 137, 139, 141, 142, 147, 148, 150	DT Year 2 Operations 1-5, 7, 13-18, 20-28 MM Addition Sprints MM Subtraction Sprints	Year 2 Number and Algebra: Addition and Subtraction Test 1-8
	Forming groups B	Uses the structure of equal groups to solve multiplication problems, and shares or groups to solve division problems.	MA1-FG-01	111, 113, 115, 130, 132, 136, 138		113, 115, 117, 118, 120, 124, 130, 132, 133, 134, 136, 137, 139, 142, 143	DT Year 2 Operations 6, 8-12, 19 DT Year 2 Operations 1-17 MM Multiplication Sprints MM Division Sprints	Year 2 Number and Algebra: Equal Groups Test 1-5 Year 2 Number and Algebra: Fractions and Money Test 1-4
Measurement and Space	Geometric measure B: Position	Represents and describes the positions of objects in familiar locations.	MA1-GM-01			78, 94	DT Year 2 Measurement 2, 8, 13	Year 2 Geometry: Shape and Movement Test 8
	Geometric measure B: Length	Measures, records, compares and estimates lengths and distances using uniform informal units, as well as metres and centimetres. Creates and recognises halves, quarters and eighths as part measures of a whole length.	MA1-GM-02 MA1-GM-03	104, 126, 141, 143		104, 141	DT Year 2 Measurement 6, 13-15, 21,22	Year 2 Measurement: Informal Units Test 1, 2, 8
	Two-dimensional spatial structure B: 2D shapes	Recognises, describes and represents including quadrilaterals and other common polygons.	MA1-2DS-01	69, 102		69, 102, 119	DT Year 2 Measurement 1, 4, 6, 9-12	Year 2 Geometry: Shape and Movement Test 1, 2, 5-7
	Two-dimensional spatial structure B: Area	Measures and compares areas using uniform informal units in rows and columns.	MA1-2DS-02	112, 149		149	DT Year 2 Measurement 6	Year 2 Measurement: Informal Units Test 3, 8
	Three-dimensional spatial structure B: 3D objects	Recognises, describes and represents familiar three-dimensional objects.	MA1-3DS-01	121		121, 140	DT Year 2 Measurement 3, 5, 7	Year 2 Geometry: Shape and Movement Test 3, 4
	Three-dimensional spatial structure B: Volume	Measures, records, compares and estimates interval volumes (capacities) and volumes using uniform informal units.	MA1-3DS-02	116			DT Year 2 Measurement 8	Year 2 Measurement: Informal Units Test 4, 5, 8
	Non-spatial measure B: Mass	Measures, records, compares and estimates the masses of objects using uniform informal units.	MA1-NSM-01	135		135	DT Year 2 Measurement 18, 19	Year 2 Measurement: Informal Units Test 6-8
Statistics and Probability	Data B	Gathers and organises data, displays data in lists, tables and picture graphs. Reasons about representations of data to describe and interpret the results.	MA1-DATA-01 MA1-DATA-02	137, 143		143	DT Data and Chance 1, 4, 5, 7-14	Year 2 Statistics: Data Test 1-6
	Chance B	Recognises and describes the element of chance in everyday events.	MA1-CHAN-01	107			DT Data and Chance 2, 3, 6	Year 2 Statistics: Data Test 7





Mathseeds Lessons and the NSW Syllabus



STAGE 2 – YEAR 3



Strand	Substrands	Outcomes	Code	Mathseeds Lesson #			Additional Mathseeds Resources
				Knowledge and Skills	Assessment	Higher Order Thinking Skills	Fluency
Number and Algebra	Whole Numbers	Applies place value to order, read and represent numbers of up to five digits.	MA2-4NA	151, 156, 161, 194		151, 153, 156, 161, 194, 199	
	Addition and Subtraction	Uses mental and written strategies for addition and subtraction involving two-, three-, four- and five-digit numbers.	MA2-5NA	159, 163, 170, 173, 178, 183		154, 159, 163, 170, 172, 178, 182, 183, 188, 193, 195, 196	MM Addition Sprints MM Subtraction Sprints
	Multiplication and Division	Uses mental and informal written strategies for multiplication and division.	MA2-6NA	155, 158, 165, 168, 171, 176, 181, 186, 190, 193, 196, 199		153, 168, 176, 181, 186, 188, 193, 196, 199	MM Multiplication Sprints MM Division Sprints
	Fractions and Decimals	Represents, models and compares commonly used fractions and decimals.	MA2-7NA	160, 175, 180, 191, 197		175, 180, 191, 197	
	Patterns and Algebra	Generalises properties of odd and even numbers, generates number patterns, and completes simple number sentences by calculating missing values.	MA2-8NA	153, 166, 188, 195		153, 168, 170, 173, 187, 188, 193, 194, 195, 199	
Measurement and Geometry	Length	Measures, records, compares and estimates lengths, distances and perimeters in metres, centimetres and millimetres.	MA2-9MG	182, 192, 198			
	Area	Measures, records, compares and estimates areas using square centimetres and square metres.	MA2-10MG	157, 200		200	
	Volume and Capacity	Measures, records, compares and estimates volumes and capacities using litres, millilitres and cubic centimetres.	MA2-11MG	154			
	Mass	Measures, records, compares and estimates the masses of objects using kilograms and grams.	MA2-12MG	172			
	Time	Reads and records time in one-minute intervals and converts between hours, minutes and seconds.	MA2-13MG	162, 179, 185, 189		179, 181, 185, 189, 200	
	Three-Dimensional Space	Makes, compares, sketches and names three-dimensional objects, including prisms, pyramids, cylinders, cones and spheres, and describes their features.	MA2-14MG	169			
	Two-Dimensional Space	Manipulates, identifies and sketches two-dimensional shapes, including special quadrilaterals, and describes their features.	MA2-15MG	152, 184			
	Angles	Identifies, describes, compares and classifies angles.	MA2-16MG	177			
	Position	Uses simple maps and grids to represent position and follow routes, including using compass directions.	MA2-17MG	164			
Statistics and Probability	Data	Selects appropriate methods to collect data, and constructs, compares, interprets and evaluates data displays, including tables, picture graphs and column graphs.	MA2-18SP	174, 187, 198			
	Chance	Describes and compares chance events in social and experimental contexts.	MA2-19SP	167			

