



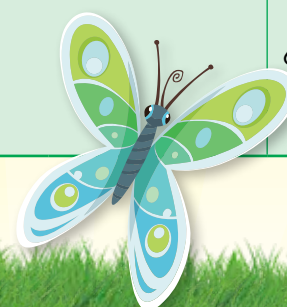


Mathseeds Lessons and The New Zealand Curriculum



YEAR 1 • LEVEL 1

| <div>YEAR 1 • LEVEL 1</div> | | | | Mathseeds Lesson # | | | Additional Mathseeds Resources | |
|---|----------------------------|--|--|---|---|--|---|---|
| Strands | Topics | Achievement objectives | Codes | Knowledge and Skills | Assessment | Higher Order Thinking Skills | Fluency | Assessment |
| | | | | Online Lesson, Printable Resources, & Problem Solving Tasks | End-of-lesson Quiz | Critical Thinking and Problem Solving Interactives | Driving Tests (DT) Mental Minute (MM) | Printable Achievement Standards Assessment |
| NUMBER AND ALGEBRA | Number strategies | Use a range of counting, grouping, and equal-sharing strategies with whole numbers. | NA1-1 | 20, 21, 22, 25, 28, 31, 34, 36, 40, 49, 50 | | 12, 19, 30, 34, 36, 40, 41, 43, 47 | DT Early Number 6, 8, 18, 19, 20, 22 DT Early Operations 1–25 MM Addition Sprints MM Subtraction Sprints | Kindergarten Number Test 3 Kindergarten Operations Tests 1–4 |
| | Number knowledge | Know the forward and backward counting sequences of whole numbers to 100. | NA1-2 | 1, 2, 3, 5, 7, 10, 11, 12, 14, 16, 17, 18, 19, 20, 21, 22, 25, 28, 31, 33, 41, 43, 45, 46, 48, 50 | | 12, 41 | DT Early Number 2, 4, 5, 9, 10, 13, 16, 17, 21, 23 | Kindergarten Number Test 1 |
| | | Know groupings with five, within ten, and with ten. | NA1-3 | 24, 30, 31, 32, 34, 36, 40, 47, 49, 50 | | 19, 30, 34, 36, 40, 43, 47 | DT Early Number 11, 12 DT Early Operations 1–7, 9–20, 22–25 MM Addition Sprints MM Subtraction Sprints | Kindergarten Number Test 4 Kindergarten Operations Tests 1–4 |
| | Patterns and relationships | Generalise that the next counting number gives the result of adding one object to a set and that counting the number of objects in a set tells how many. | NA1-5 | 2, 3, 5, 7, 10, 11, 12, 14, 16, 17, 18, 19, 20, 22, 25, 28, 31, 41, 43, 45, 46, 50 | | 12, 41 | DT Early Number 1, 3, 7, 14, 15 | Kindergarten Number Test 2 |
| | | Create and continue sequential patterns. | NA1-6 | 8, 27, 37 | | 6, 15, 23, 27, 31, 37, 38, 40, 46 | DT Early Patterns 1–9 | Kindergarten Number Test 5 |
| | GEOMETRY AND MEASUREMENT | Measurement | Order and compare objects or events by length by direct comparison and/or counting whole numbers of units. | GM1-1 | 13, 26 | | | DT Early Measurement 1, 2, 5, 6, 9, 10 |
| Order and compare objects or events by volume and capacity by direct comparison and/or counting whole numbers of units. | | | GM1-1 | 13, 38 | | | DT Early Measurement 15, 16, 20 | Kindergarten Measurement Test 5 |
| Order and compare objects or events by weight (mass) by direct comparison and/or counting whole numbers of units. | | | GM1-1 | 13, 29 | | | DT Early Measurement 7, 8, 11, 12 | Kindergarten Measurement Test 4 |
| Order and compare objects or events by time by direct comparison and/or counting whole numbers of units. | | | GM1-1 | 39, 42 | | | DT Early Measurement 1, 4, 13, 14, 17, 18, 19 | Kindergarten Measurement Tests 6, 7 |
| Shape | | Sort objects by their appearance. | GM1-2 | 4, 6, 9, 15, 23, 35, 44 |  | 6, 8, 15, 23, 27 | DT Early Geometry 1–8, 15–23 | Kindergarten Geometry Tests 1–3 |





Mathseeds Lessons and The New Zealand Curriculum



YEAR 2 • LEVEL 1

| | | | | Mathseeds Lesson # | | | Additional Mathseeds Resources | |
|--------------------------|----------------------------|---|-------|---|----------------------------------|---|--|--|
| Strands | Topics | Achievement objectives | Codes | Knowledge and Skills Online Lesson, Printable Resources, & Problem Solving Tasks | Assessment End-of-lesson Quiz | Higher Order Thinking Skills Critical Thinking and Problem Solving Interactives | Fluency Driving Tests (DT) Mental Minute (MM) | Assessment Printable Achievement Standards Assessment |
| NUMBER AND ALGEBRA | Number strategies | Use a range of counting, grouping, and equal-sharing strategies with whole numbers and fractions. | NA1-1 | 51, 53, 56, 58, 61, 63, 65, 66, 68, 71, 72, 74, 76, 77, 79, 85, 88, 90, 91, 93, 95, 96, 98, 100 | | 51, 53, 56, 60, 65, 67, 68, 71, 74, 75, 76, 77, 79, 81, 82, 85, 88, 91, 93, 95, 96, 98, 100 | DT Year 1 Number 5, 9, 10, 17-20, 24 DT Year 1 Operations 6-20 MM Addition Sprints MM Subtraction Sprints | Year 1 Number and Algebra: Place Value Tests 1-6 Year 1 Number and Algebra: Operations Tests 1-6 Year 1 Number and Algebra: Fractions and Money Tests 2, 3 |
| | Equations and expressions | Communicate and explain counting, grouping, and equal-sharing strategies, using words, numbers, and pictures. | NA1-4 | | | | | |
| | Number knowledge | Know the forward and backward counting sequences of whole numbers to 100. | NA1-2 | 56, 60, 67, 75, 81, 86 | | 60, 67 | DT Year 1 Number 1-4, 6-8, 11-16, 21-23 | Year 1 Number and Algebra: Whole Numbers Tests 1, 3-5, 7-9 |
| | | Know groupings with five, within ten, and with ten. | NA1-3 | 51, 53, 65 | | 51, 53, 56 | DT Year 1 Operations 1, 2, 3 MM Addition Sprints MM Subtraction Sprints | Year 1 Number and Algebra: Operations Tests 1-3 |
| | Patterns and relationships | Generalise that the next counting number gives the result of adding one object to a set and that counting the number of objects in a set tells how many. | NA1-5 | 56, 60 | | 67 | DT Year 1 Operations 4, 5 | Year 1 Number and Algebra: Whole Numbers Tests 2, 6 |
| | | Create and continue sequential patterns. | NA1-6 | 77, 79, 90 | | 57, 62, 63, 72, 78, 82, 87, 93, 94 | DT Year 1 Patterns and Fractions 1, 2, 4, 7-10, 12 | Year 1 Number and Algebra: Patterns Tests 1-7 |
| GEOMETRY AND MEASUREMENT | Measurement | Order and compare objects or events by length by direct comparison and/or counting whole numbers of units. | GM1-1 | 84 | | | DT Year 1 Measurement 2, 4, 13, 14 | Year 1 Measurement: Length and Capacity Tests 1-5 |
| | | Order and compare objects or events by area by direct comparison and/or counting whole numbers of units. | GM1-1 | 59 | | 59 | | |
| | | Order and compare objects or events by volume and capacity by direct comparison and/or counting whole numbers of units. | GM1-1 | 89 | | | DT Year 1 Measurement 11, 17, 18, 19 | Year 1 Measurement: Length and Capacity Tests 6, 7 |
| | | Order and compare objects or events by weight (mass) by direct comparison and/or counting whole numbers of units. | GM1-1 | 73 | | | | |
| | | Order and compare objects or events by time by direct comparison and/or counting whole numbers of units. | GM1-1 | 54, 70, 87 | | 87 | DT Year 1 Measurement 1, 8-10, 15, 16 | Year 1 Measurement: Time Tests 1-6 |
| | Shape | Sort objects by their appearance. | GM1-2 | 52, 62, 99 | | | DT Year 1 Geometry 1-3, 6-8, 10, 17-19 | Year 1 Geometry: Shape Tests 1-6 |
| | Position and orientation | Give and follow instructions for movement that involve distances, directions, and half or quarter turns. | GM1-3 | 55, 57, 78, 94 | | | DT Year 1 Geometry 4, 5, 11, 12, 14-16 | Year 1 Geometry: Shape Tests 7, 8 |
| | | Describe their position relative to a person or object. | GM1-4 | | | | | |
| | Transformation | Communicate and record the results of translations, reflections, and rotations on plane shapes. | GM1-5 | 69 | | 69 | DT Year 1 Geometry 9, 13 | |
| STATISTICS | Statistical investigation | Conduct investigations using the statistical enquiry cycle: - posing and answering questions - gathering, sorting and counting, and displaying category data - discussing the results. | S1-1 | 80, 97 | | 80 | DT Year 1 Data 1-4, 6, 9, 10, 12-15 | Year 1 Statistics: Data Tests 1-5 |
| | Statistical literacy | Interpret statements made by others from statistical investigations and probability activities. | S1-2 | | | | | |
| | Probability | Investigate situations that involve elements of chance, acknowledging and anticipating possible outcomes. | S1-3 | 82 | | | DT Year 1 Data 5, 7, 8, 11 | Year 1 Statistics: Data Test 6 |

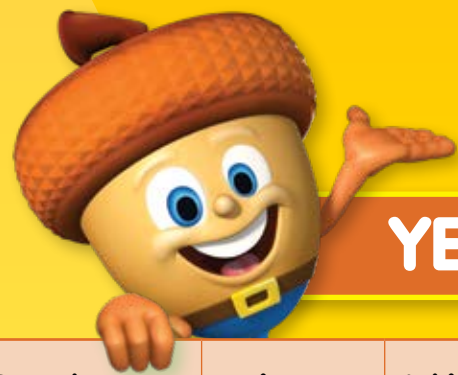


Mathseeds Lessons and The New Zealand Curriculum



YEAR 3 • LEVEL 2

| | | | | Mathseeds Lesson # | | | Additional Mathseeds Resources | |
|--------------------------|----------------------------|--|--------------|--|----------------------------------|---|--|---|
| Strands | Topics | Achievement objectives | Codes | Knowledge and Skills Online Lesson, Printable Resources, & Problem Solving Tasks | Assessment End-of-lesson Quiz | Higher Order Thinking Skills Critical Thinking and Problem Solving Interactives | Fluency Driving Tests (DT) Mental Minute (MM) | Assessment Printable Achievement Standards Assessment |
| NUMBER AND ALGEBRA | Number strategies | Use simple additive strategies with whole numbers and fractions. | NA2-1 | 103, 110, 111, 113, 115, 118, 120, 124, 128, 130, 131, 134, 136, 137, 138, 139, 144, 146, 148, 150 | | 105, 110, 113, 118, 120, 124, 125, 128, 130, 131, 132, 133, 134, 135, 136, 137, 139, 140, 141, 142, 143, 144, 146, 147, 148, 149, 150 | DT Year 2 Operations 6–28 MM Addition Sprints MM Subtraction Sprints MM Multiplication Sprints MM Division Sprints | Year 2 Number and Algebra: Equal Groups Tests 1–5 Year 2 Number and Algebra: Addition and Subtraction Tests 3, 5–8 |
| | Equations and expressions | Communicate and interpret simple additive strategies, using words, diagrams (pictures), and symbols. | NA2-6 | | | | | |
| | Number knowledge | Know forward and backward counting sequences with whole numbers to at least 1000. | NA2-2 | 101, 106 | | 105, 117, 120, 133 | DT Year 2 Number 2, 3, 6, 9, 10, 12–15, 17 | Year 2 Number and Algebra: Numbers to 1000 Tests 1, 4 |
| | | Know the basic addition and subtraction facts. | NA2-3 | 108, 142 | | 142 | DT Year 2 Operations 1–5 MM Addition Sprints MM Subtraction Sprints | Year 2 Number and Algebra: Addition and Subtraction Tests 1, 2, 4 |
| | | Know how many ones, tens, and hundreds are in whole numbers to at least 1000. | NA2-4 | 105, 122 | | 101, 105, 106 | DT Year 2 Number 1, 4, 5, 7, 8, 11, 16, 18–24 | Year 2 Number and Algebra: Numbers to 1000 Tests 2, 3, 5–7 |
| | | Know simple fractions in everyday use. | NA2-5 | 132 | | | DT Year 2 Patterns and Fractions 5, 11, 12, 14–17 | Year 2 Number and Algebra: Fractions and Money Tests 1–4 |
| | Patterns and relationships | Generalise that whole numbers can be partitioned in many ways. | NA2-7 | 105, 129 | | | | |
| | | Find rules for the next member in a sequential pattern. | NA2-8 | 117, 133 | | 102, 117, 120, 132, 133 | DT Year 2 Patterns and Fractions 1–4, 6–10, 13 | Year 2 Number and Algebra: Number Patterns Tests 1–8 |
| GEOMETRY AND MEASUREMENT | Measurement | Create and use appropriate units and devices to measure length. Partition and/or combine like measures and communicate them, using numbers and units. | GM2-1, GM2-2 | 104, 126, 141, 143 | | | DT Year 2 Measurement 6, 13–15, 21, 22 | Year 2 Measurement: Informal Units Tests 1, 2 |
| | | Create and use appropriate units and devices to measure area. Partition and/or combine like measures and communicate them, using numbers and units. | GM2-1, GM2-2 | 112, 149 | | | DT Year 2 Measurement 6 | Year 2 Measurement: Informal Units Test 3 |
| | | Create and use appropriate units and devices to measure volume and capacity. Partition and/or combine like measures and communicate them, using numbers and units. | GM2-1, GM2-2 | 116 | | | DT Year 2 Measurement 8 | Year 2 Measurement: Informal Units Tests 4, 5 |
| | | Create and use appropriate units and devices to measure weight (mass). Partition and/or combine like measures and communicate them, using numbers and units. | GM2-1, GM2-2 | 135 | | | DT Year 2 Measurement 18, 19 | Year 2 Measurement: Informal Units Tests 6, 7 |
| | | Create and use appropriate units and devices to measure time. Partition and/or combine like measures and communicate them, using numbers and units. | GM2-1, GM2-2 | 109, 114, 123, 127 | | 109 | DT Year 2 Measurement 1–5, 7, 10, 16, 17, 20 | Year 2 Measurement: Time Tests 1–5 |
| | Shape | Sort objects by their spatial features, with justification. | GM2-3 | 119, 145 | | | DT Year 2 Geometry 3–7, 10 | Year 2 Geometry: Shape and Movement Tests 1–5 |
| | | Identify and describe the plane shapes found in objects. | GM2-4 | 121 | | 121, 140 | | Year 2 Geometry: Shape and Movement Test 4 |
| | Transformation | Predict and communicate the results of translations, reflections, and rotations on plane shapes. | GM2-7 | 102 | | 102, 104, 106, 108, 115, 119, 133, 145 | DT Year 2 Geometry 1, 9, 11, 12 | Year 2 Geometry: Shape and Movement Tests 6, 7 |
| STATISTICS | Statistical investigation | Conduct investigations using the statistical enquiry cycle: - posing and answering questions - gathering, sorting and displaying category and whole number data - communicating findings based on the data. | S2-1 | 143 | | | DT Year 2 Data 1, 4, 5, 7–14 | Year 2 Statistics: Data Tests 1–6 |
| | Statistical literacy | Compare statements with the features of simple data displays from statistical investigations or probability activities undertaken by others. | S2-2 | | | | | |
| | Probability | Investigate simple situations that involve elements of chance, recognising equal and different likelihoods and acknowledging uncertainty. | S2-3 | 107 | | | DT Year 2 Data 2, 3, 6 | Year 2 Statistics: Data Test 7 |



Mathseeds Lessons and The New Zealand Curriculum



YEAR 4 • LEVEL 2

| | | | | Mathseeds Lesson # | | | Additional Mathseeds Resources |
|--------------------------|----------------------------|--|--------------|--|--------------------|---|---|
| Strands | Topics | Achievement objectives | Codes | Knowledge and Skills | Assessment | Higher Order Thinking Skills | Fluency |
| | | | | Online Lesson, Printable Resources, & Problem Solving Tasks | End-of-lesson Quiz | Critical Thinking and Problem Solving Interactives | Mental Minute (MM) |
| NUMBER AND ALGEBRA | Number strategies | Use simple additive strategies with whole numbers and fractions. | NA2-1 | 155, 158, 163, 165, 168, 170, 171, 173, 175, 176, 178, 181, 183, 186, 188, 190, 191, 193, 196, 199 | | 153, 154, 159, 163, 168, 170, 172, 176, 178, 181, 182, 183, 186, 188, 193, 194, 195, 196, 199 | MM Addition Sprints MM Subtraction Sprints MM Multiplication Sprints MM Division Sprints |
| | Equations and expressions | Communicate and interpret simple additive strategies, using words, diagrams (pictures), and symbols. | NA2-6 | | | | |
| | Number knowledge | Know forward and backward counting sequences with whole numbers to at least 1000. | NA2-2 | 151, 156 | | 153, 161, 194, 199 | |
| | | Know the basic addition and subtraction facts. | NA2-3 | 173 | | | MM Addition Sprints MM Subtraction Sprints |
| | | Know how many ones, tens, and hundreds are in whole numbers to at least 1000. | NA2-4 | 151, 156, 161 | | 153, 161, 170, 173, 194, 195, 199 | |
| | | Know simple fractions in everyday use. | NA2-5 | 160, 175, 180, 191, 197 | | 175, 180, 191, 197 | |
| | Patterns and relationships | Generalise that whole numbers can be partitioned in many ways. | NA2-7 | 161, 194 | | 151, 156, 194 | |
| | | Find rules for the next member in a sequential pattern. | NA2-8 | 153, 166, 171, 195 | | 153, 168, 187, 195 | |
| GEOMETRY AND MEASUREMENT | Measurement | Create and use appropriate units and devices to measure length. Partition and/or combine like measures and communicate them, using numbers and units. | GM2-1, GM2-2 | 182, 192, 198 | | | |
| | | Create and use appropriate units and devices to measure area. Partition and/or combine like measures and communicate them, using numbers and units. | GM2-1, GM2-2 | 157, 200 | | | |
| | | Create and use appropriate units and devices to measure volume and capacity. Partition and/or combine like measures and communicate them, using numbers and units. | GM2-1, GM2-2 | 154 | | | |
| | | Create and use appropriate units and devices to measure weight (mass). Partition and/or combine like measures and communicate them, using numbers and units. | GM2-1, GM2-2 | 172 | | | |
| | | Create and use appropriate units and devices to measure turn (angle). Partition and/or combine like measures and communicate them, using numbers and units. | GM2-1, GM2-2 | 177 | | | |
| | | Create and use appropriate units and devices to measure time. Partition and/or combine like measures and communicate them, using numbers and units. | GM2-1, GM2-2 | 162, 179, 185, 189 | | 179, 181, 185, 189, 200 | |
| | Shape | Sort objects by their spatial features, with justification. | GM2-3 | 169, 184 | | | |
| | | Identify and describe the plane shapes found in objects. | GM2-4 | 169 | | | |
| | Position and orientation | Create and use simple maps to show position and direction. | GM2-5 | 164 | | | |
| | | Describe different views and pathways from locations on a map. | GM2-6 | | | | |
| | Transformation | Predict and communicate the results of translations, reflections, and rotations on plane shapes. | GM2-7 | 152 | | | |
| STATISTICS | Statistical investigation | Conduct investigations using the statistical enquiry cycle: - posing and answering questions - gathering, sorting and displaying category and whole number data - communicating findings based on the data. | S2-1 | 174, 187, 198 | | | |
| | Statistical literacy | Compare statements with the features of simple data displays from statistical investigations or probability activities undertaken by others. | S2-2 | | | | |
| | Probability | Investigate simple situations that involve elements of chance, recognising equal and different likelihoods and acknowledging uncertainty. | S2-3 | 167 | | | |