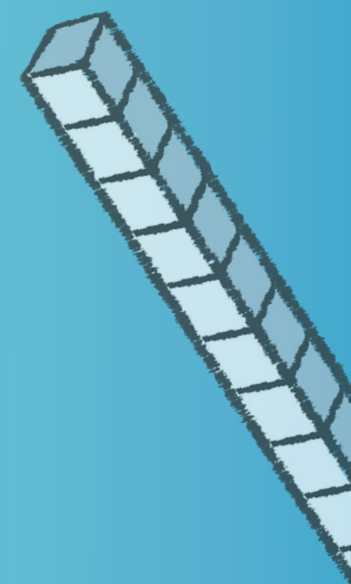
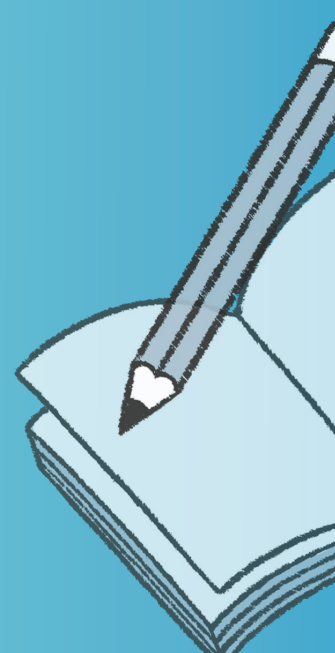
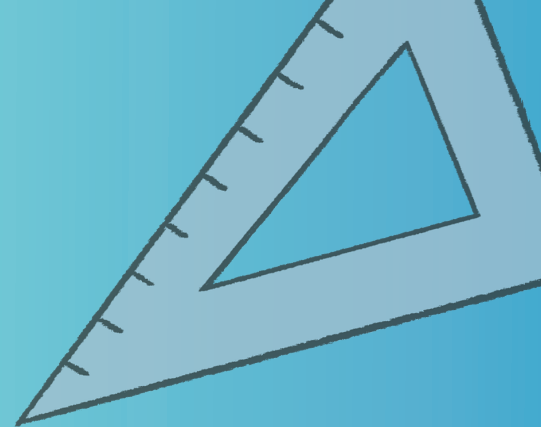


Mathletics

NAPLAN Year 3 Numeracy Test 3



A 3P Learning product

Year 3 Numeracy Practice Test 3

Student details

First name _____

Last name _____

Class _____ Date _____

Test instructions

You have 45 minutes to complete this test.

You are **NOT allowed** to use a calculator.

You should use a pencil to write your answers or shade in the bubble.

If you make a mistake, rub it out thoroughly.

Revised 2014 edition, all rights reserved. The following test has been designed by 3P Learning to prepare students for the National Assessment Program Numeracy Test. This test is to be used for revision purposes only. 3P Learning does not guarantee that the format of this test is the same as an actual test.

Year 3 Numeracy Practice Test 3

1 How many months are there in three years?

36

32

24

12

Shade one bubble.



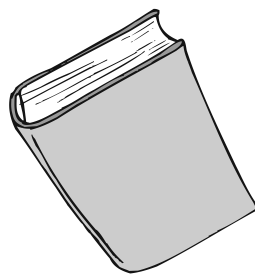
2 Which book has the least amount of pages?



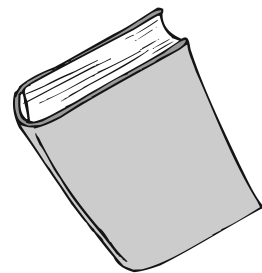
732



723



729



719

Shade one bubble.



3 Altogether, how many sides are there in 3 triangles and 4 squares?

12

21

25

28

Shade one bubble.




Year 3 Numeracy Practice Test 3

4 Which number in the grid is below and to the right of the number 3?

1	?	2
!	3	\$
4	*	5

- 1
- 2
- 4
- 5

Shade one bubble. 


5 $67 \times 2 =$

- 268
- 120
- 134
- 127

Shade one bubble. 

6 Yuri's birthday is on the 29th May.
What day of the week is Emma's birthday if it is 3 weeks earlier than Yuri's?

May						
SUN	MON	TUE	WED	THU	FRI	SAT
				1	2	3
4	5	6	7	8	9	10
11	12	13	14	15	16	17
18	19	20	21	22	23	24
25	26	27	28	29	30	31


Write the answer in the box. 

Year 3 Numeracy Practice Test 3

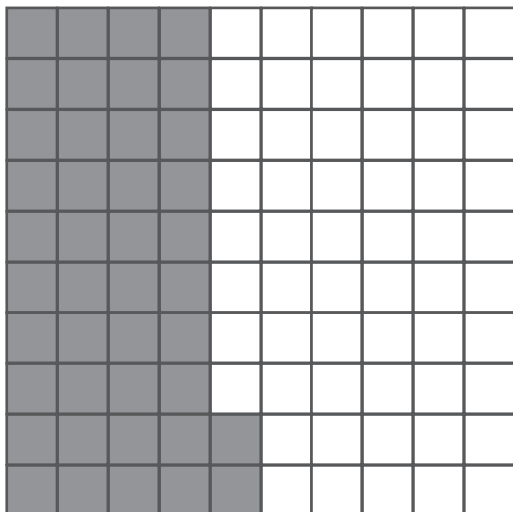
- 7 Michael picked one of these cards at random.
Which one of these is it impossible for Michael to pick?

1	5	10	15	20	50
---	---	----	----	----	----

- A number less than 10
- A number less than 100
- A number greater than 1
- A number greater than 50

Shade one bubble. 

- 8 What fraction of the square is shaded?



- $\frac{40}{100}$
- $\frac{42}{100}$
- $\frac{60}{100}$
- $\frac{75}{100}$

Shade one bubble. 

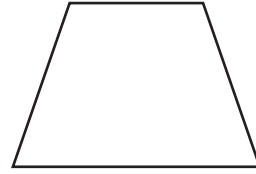
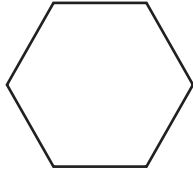
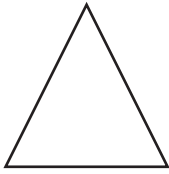
- 9 Paula went to a concert. She bought a concert ticket for \$19, an ice cream for \$5 and two bottles of water. What other information is needed to find the total amount Paula spent at the concert?

- The cost of one ice cream
- The type of ice cream Paula brought
- The cost of one bottle of water
- The number of people at the concert

Shade one bubble. 

Year 3 Numeracy Practice Test 3

10 Which shape has the least amount of corners ?



Shade one bubble. 

11 $6 + 300 + 70 = \square ?$

637



673



367



376



Shade one bubble. 

12 A jug holds 1 litre of water. What is the largest number of 200 mL glasses that can be filled from the jug?

4



5



6



7



Shade one bubble. 

Year 3 Numeracy Practice Test 3

- 13 Naomi bought 6 chocolates for \$3.00.
Each chocolate cost the same amount.

How much did each chocolate cost?

60 cents

50 cents

\$3.00

\$18.00

Shade one bubble.



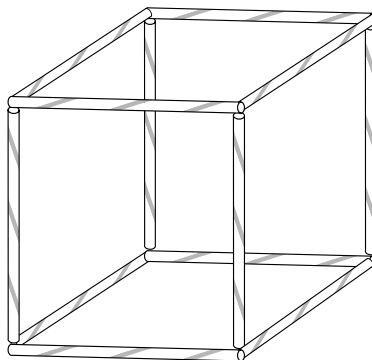
- 14 Which group of candles is even?



Shade one bubble.



- 15 Melina made this skeleton of a cube using 12 straws.



How many straws does she need to make a skeleton of a triangular prism?

4

6

9

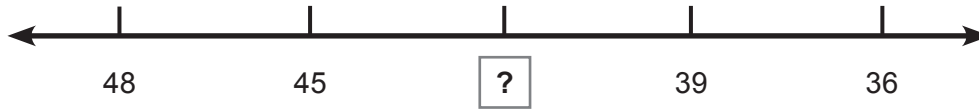
12

Shade one bubble.



Year 3 Numeracy Practice Test 3

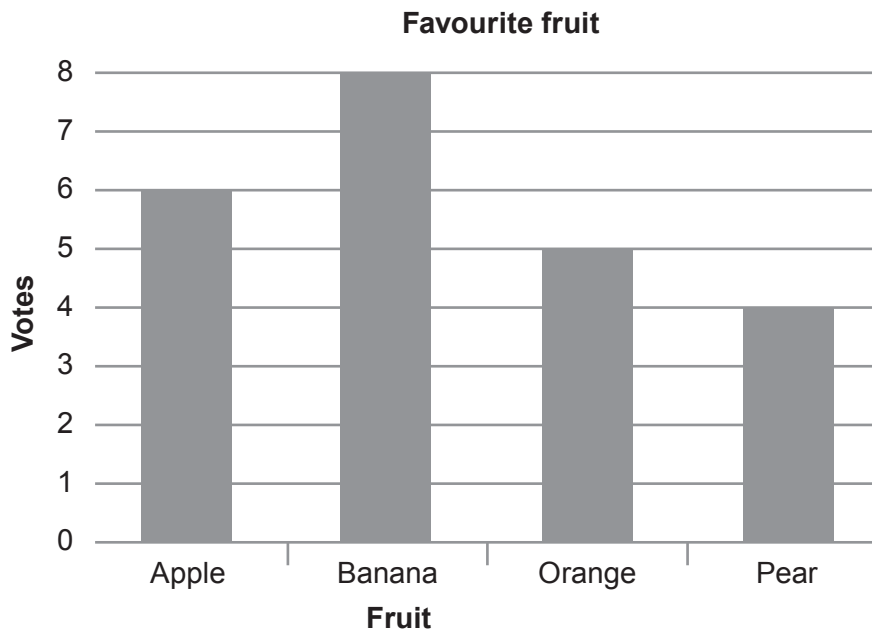
16 What is the missing number?



- 49 42 50 33

Shade one bubble.

17 Year 3 students did a survey about their favourite fruit. This graph shows the results.



How many children were surveyed?

- 22 23 24 25

Shade one bubble.

18 Jai was counting backwards by 5s.



Which number should go here?

- 22 23 24 25

Shade one bubble.

Year 3 Numeracy Practice Test 3

19 Look at this pattern of shapes.



Which letter pattern below matches this shape pattern?

- ABBAABBA
- ABAABBAB
- BABBABBA
- ABBABBAB

Shade one bubble.

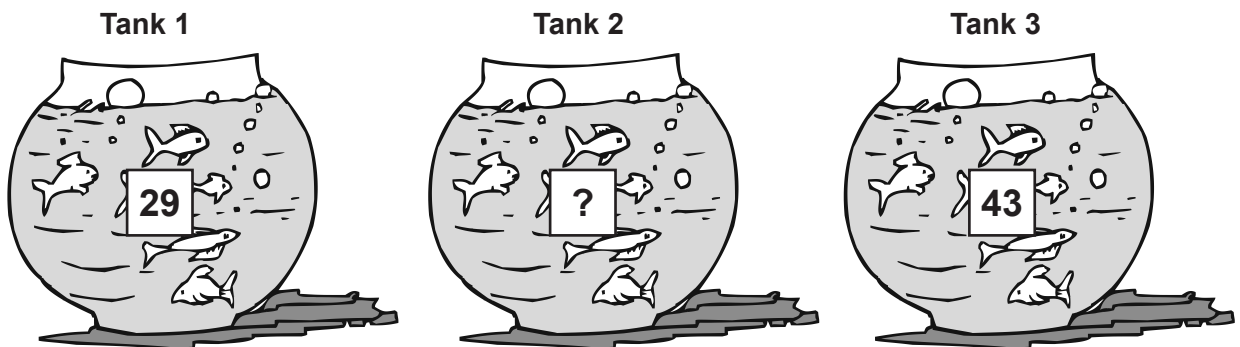


20 Anne has 4 coins. The coins add up to 85 cents.
How many 10 cent coins does she have?

Write the answer
in the box.



21 Tank 2 contains more fish than Tank 1 but fewer fish than Tank 3.



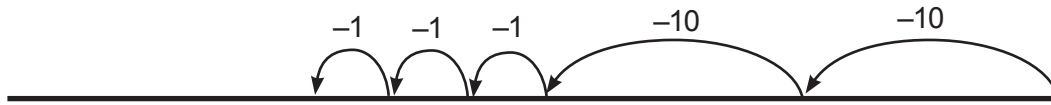
How many fish are in Tank 2?

- | | | | |
|-----------------------|-----------------------|-----------------------|-----------------------|
| 48 | 32 | 28 | 14 |
| <input type="radio"/> | <input type="radio"/> | <input type="radio"/> | <input type="radio"/> |

Shade one bubble.



22 This is Matt's number line.



Matt used the jump method to answer a question using his number line.
He started at the number 56.

Write the numbers in the boxes that match Matt's number line.

$$\square - \square = \square$$

Write one number
in each box.



23 This recipe makes 8 pancakes.

Pancake Recipe
4 cups of plain flour
6 teaspoons of baking powder
6 teaspoons of sugar
1 cup of milk

Victor used this recipe to make 40 pancakes.

How many cups of plain flour did he use?

- | | | | |
|-----------------------|-----------------------|-----------------------|-----------------------|
| 10 | 20 | 30 | 40 |
| <input type="radio"/> | <input type="radio"/> | <input type="radio"/> | <input type="radio"/> |

Shade one bubble.



24 **4:50 pm** This is the time on Anita's watch.

5:10 pm This is time on Paul's watch.

What is the difference in time?

- 40 minutes
- 50 minutes
- 20 minutes
- 10 minutes

Shade one bubble.








Year 3 Numeracy Practice Test 3

- 25** Dinesh is thinking of a number less than 12. He multiplies it by 3. He divides the answer by 2 then subtracts 3. He ends up with the same number he started with. What is Dinesh's number?

4 6 8 10

Shade one bubble. 

- 26** This table shows the number of cows owned by some farmers.

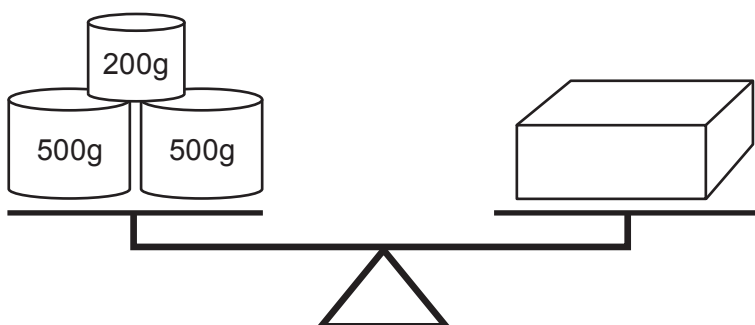
Number of cows	
Farmer Jim	
Farmer Paula	
Farmer Susan	
Farmer Omar	
Key:  = 8 cows	

How many more cows does Farmer Jim have than Farmer Omar?

5 36 40 52

Shade one bubble. 

- 27** Look at this equal arm balance. What is the mass of the prism?



- 1.2 kilograms
- 1 020 grams
- 12 kilograms
- 700 grams

Shade one bubble. 

Year 3 Numeracy Practice Test 3

28 $54 \div 3 = \square$

28

18

17

16

Shade one bubble.



29 Look at these bunches of flowers.

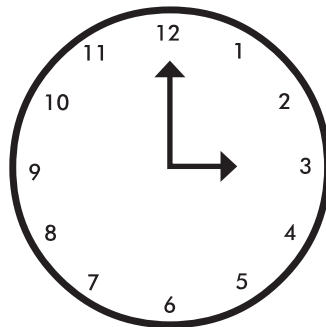


There are 7 flowers in each bunch.

In the boxes, write a multiplication number sentence about the total number of flowers.

× =

30 According to this clock the time is 3:00.



Imagine that the angle between the two hands of the clock was shaded.

At which of these times would the angle between the two hands be largest?

10:40

3:55

9:15

1:10

Shade one bubble.



Year 3 Numeracy Practice Test 3

31 Look at this number chart.
What rule has been used to make this pattern?

1	2	3	4	5
	7	8		10
11		13	14	
16	17		19	20
	22	23		25

- Cover all even numbers
- Cover all even numbers starting at 6
- Cover numbers when counting by threes starting at 6
- Cover numbers when counting by threes

Shade one bubble.

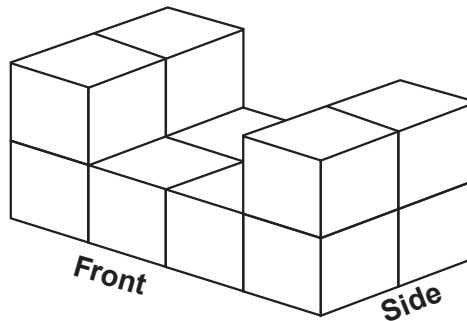
32 What is the symbol Ω worth?

$$\begin{aligned} \Omega \Omega &= 6 \\ \Omega \Omega \Omega &= 9 \\ \Omega &= ? \end{aligned}$$

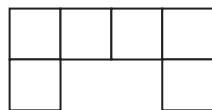
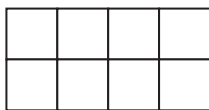
- 1
- 2
- 3
- 5

Shade one bubble.

33 Nadia made this model.



Which of the following is a front view of her model?



Shade one bubble.

END OF TEST