



Mathletics

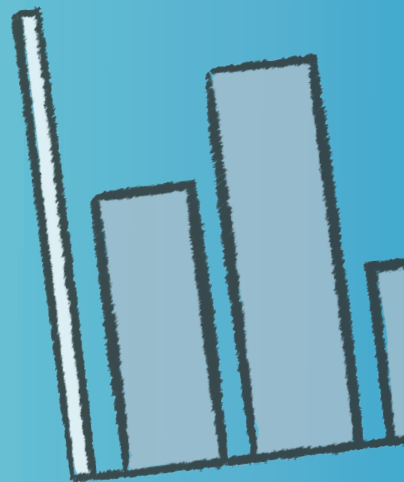
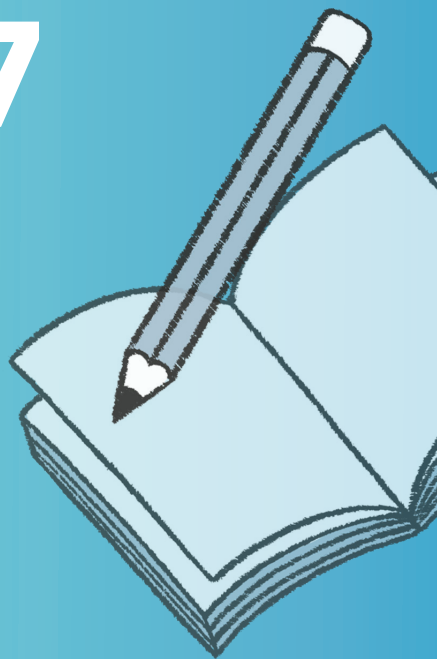
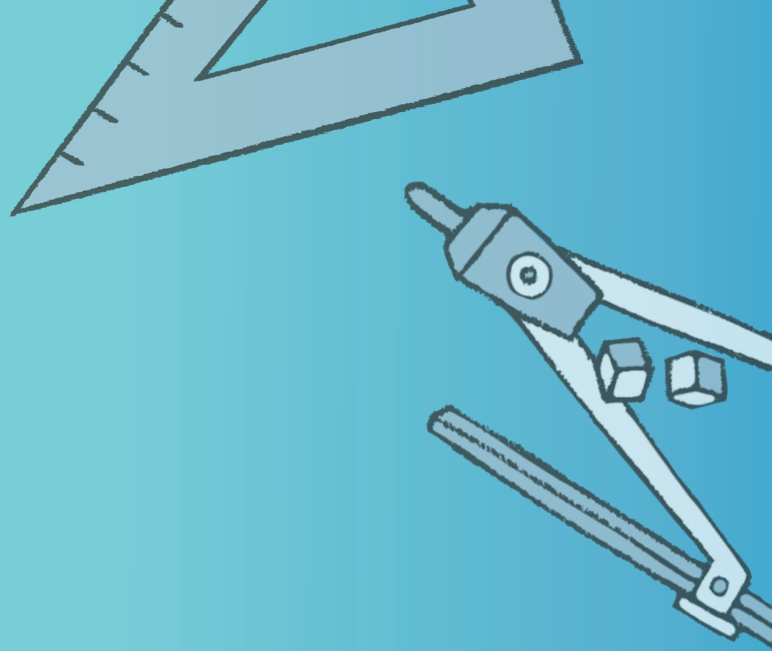
NAPLAN Year 7 Numeracy Test 2

(Non-Calculator)

Answers



A 3P Learning product



1 How much greater than 4 538 is 5 138?


- 6 60 600 16
-

Shade one bubble. 

2 0.5, 0.9, 1.3, ?, 2.1

The missing number from this sequence is:


- 1.4 1.5 1.6 1.7
-

Shade one bubble. 

3 Solve for x .

$$6x - 5 = 37$$

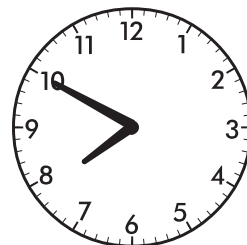
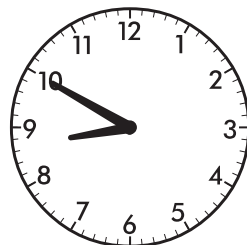
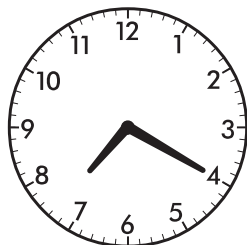
$$x = \boxed{7}$$

Write your answer in the box. 

4 The bus arrives at the bus stop at 8:40 am.

Sam looks at the clock and says, "I must be at the bus stop in 20 minutes."

What time is showing on the clock?



Shade one bubble. 

5 When some money was shared out equally between 8 people, each person received \$6.00.

If the same amount was shared between 12 people, how much money would each person receive?

- \$8.00
 \$6.00
 \$4.00
 \$3.00

Shade one bubble.

6 What is the size of angle x ?

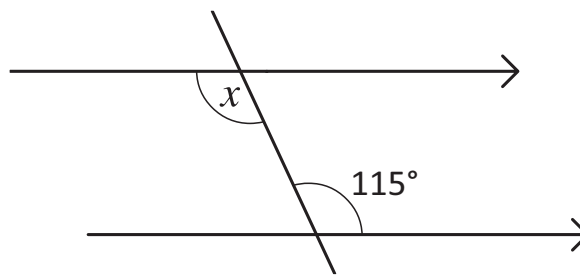


Diagram not drawn to scale.

- 15°
 45°
 65°
 115°

Shade one bubble.

7 375% is equal to:

- $3\frac{3}{4}$
 $3\frac{1}{5}$
 $3\frac{1}{4}$
 $3\frac{1}{2}$

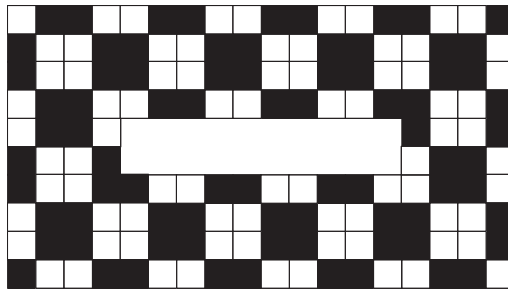
Shade one bubble.

8 What is the rule relating the values shown in the table?

x	2	3	4	5	6
y	1	3	5	7	9

- $y = 2x + 3$
 $y = 3x + 2$
 $y = 2x - 3$
 $y = 3x - 2$

Shade one bubble.



9 The piece missing from the inside of this tessellating pattern is:

Shade one bubble.

<input type="radio"/>	<input checked="" type="radio"/>	<input type="radio"/>	<input type="radio"/>

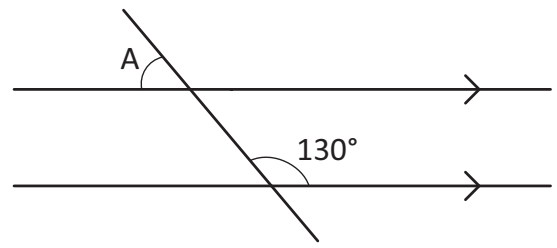


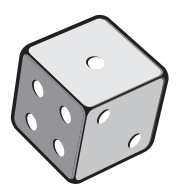
Diagram not drawn to scale.

10 From the diagram, what size is angle A?

45°	50°	85°	130°
<input type="radio"/>	<input checked="" type="radio"/>	<input type="radio"/>	<input type="radio"/>

Shade one bubble.

11 A regular six-sided die is rolled once.



The chance of getting a number greater than 5 is:

certain	likely	unlikely	impossible
<input type="radio"/>	<input type="radio"/>	<input checked="" type="radio"/>	<input type="radio"/>

Shade one bubble.

12 Jackson wants to buy an iPod for \$270 and has set himself a goal of 9 months to save up.

To buy the iPod in 9 months, the mean (average) amount that Jackson needs to save each month is:

\$20	\$30	\$35	\$9
<input type="radio"/>	<input checked="" type="radio"/>	<input type="radio"/>	<input type="radio"/>

Shade one bubble.

13 $-18 + 3 =$

- 21
 -15
 15
 21

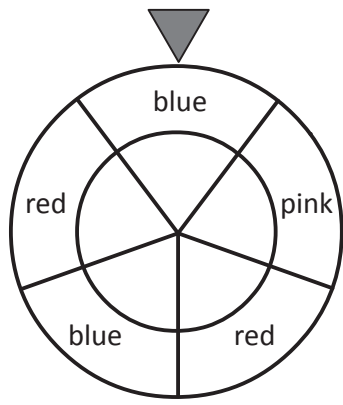
Shade one bubble.

14 Which of these has the least value?

- $\frac{3}{4}$
 $\frac{1}{5}$
 50%
 0.3

Shade one bubble.

15 What is the chance that this spinner will not land on pink?

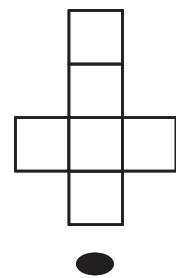
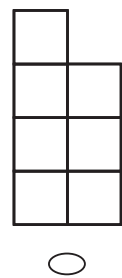
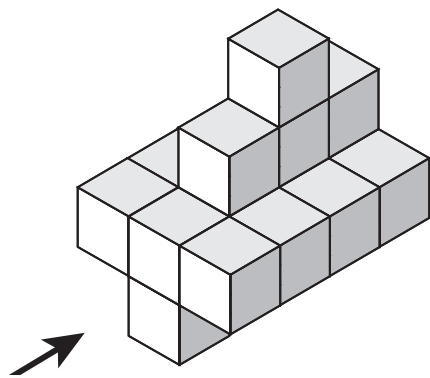


- $\frac{2}{5}$
 $\frac{1}{5}$
 $\frac{3}{5}$
 $\frac{4}{5}$

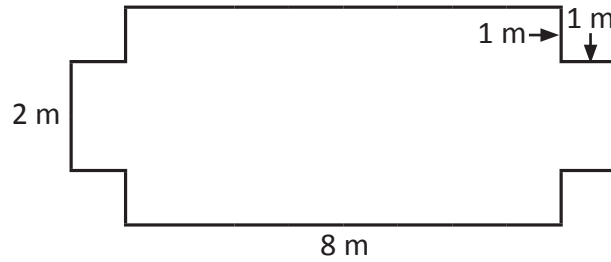
Shade one bubble.

16 Tess builds a model from cubes.

What is the view seen from the direction of the arrow?



Shade one bubble.



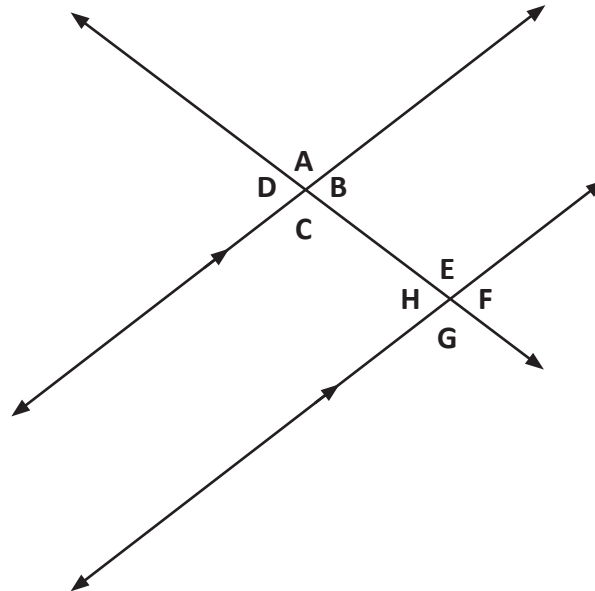
17 The perimeter of this shape is:

28 m

Write your answer in the box.



Look at this diagram and answer questions 18 and 19.



18 Angle F is equal to:

E and H

A and B

B and D

G and E

Shade one bubble.



19 Angles A and C:

are alternate angles

are corresponding angles

are complementary angles

are vertically opposite angles

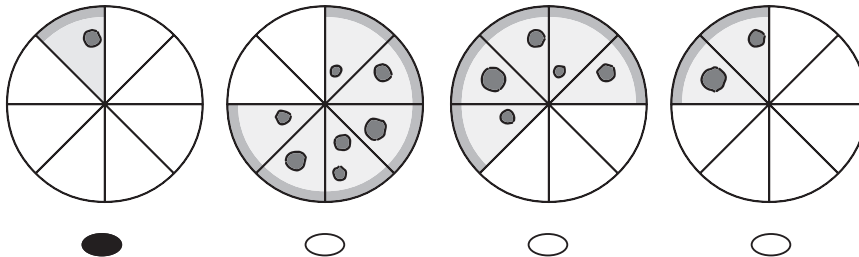
Shade one bubble.



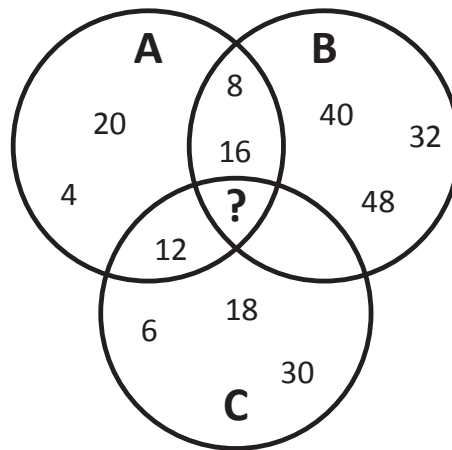
- 20 Ben and Mia shared a pizza.
Ben ate $\frac{5}{8}$ of the pizza and Mia ate $\frac{1}{4}$ of the pizza.

Which picture shows how much pizza was left over?

Shade one bubble.



- 21 In the Venn diagram, all the numbers in Set A are multiples of 4.
In Set B, the numbers are multiples of 8 and Set C contains multiples of 6.



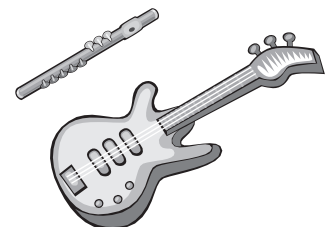
Which number should go in the intersecting segment of all three sets?

- 14 24 36 28

Shade one bubble.

- 22 The table below shows the number of students from two classes that play a musical instrument.

	Flute	Guitar
7A	18	7
7B	19	6



What is the probability that a student, chosen at random, will be from 7A and plays guitar?

- $\frac{25}{50}$ $\frac{18}{50}$ $\frac{7}{50}$ $\frac{13}{50}$

Shade one bubble.

23 $2^3 \times 2^2 = \boxed{?}$

32



12



24



48

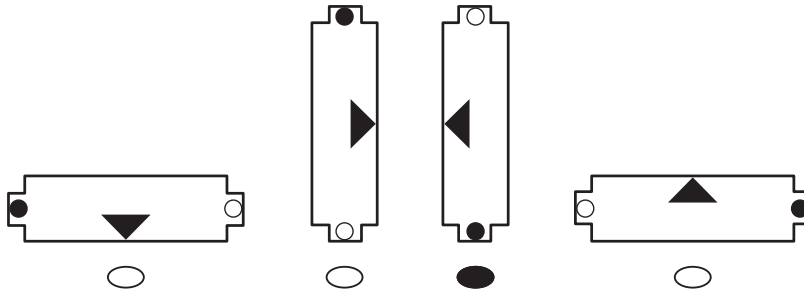


Shade one bubble. 

24 The shape below is shown before it was rotated a quarter turn clockwise.

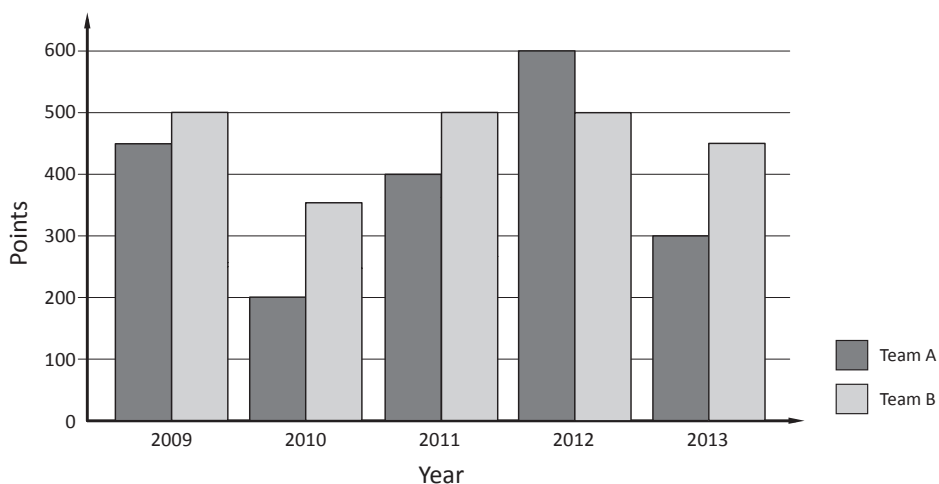


What did the shape look like after it was rotated?



Shade one bubble. 

25 A school plays netball each year. There are two teams. Here are their results:



What is the average (mean) difference in points between the two teams over the five seasons?

100



110



150

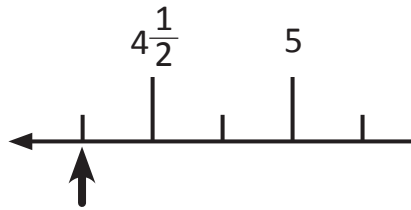


180



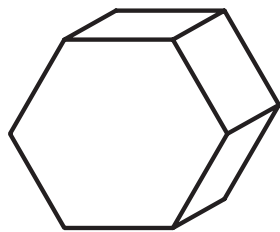
Shade one bubble. 

26 Which number goes on the number line at the point shown by the arrow:

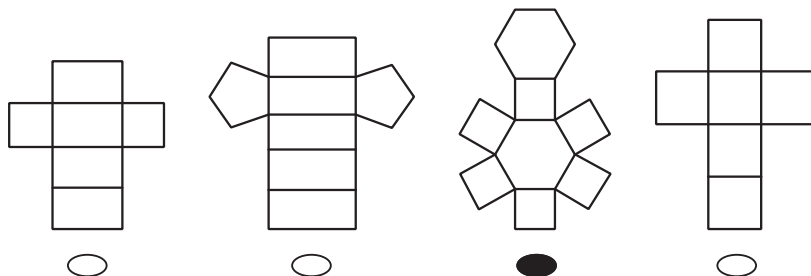


- 4
 $4\frac{1}{4}$
 $4\frac{1}{2}$
 $4\frac{3}{4}$

Shade one bubble.

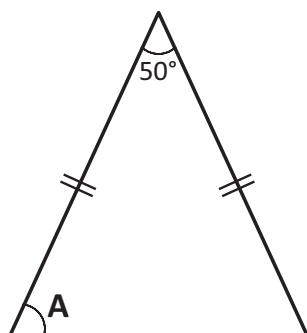


27 Which is the net of this hexagonal prism?



Shade one bubble.

28 An isosceles triangle is drawn.



What is the size of angle A?

°

Write your answer in the box.

- 29 Dan and his friends are planning a party. Each person at the party will get 2 slices of pizza and 3 samosas. They make 8 pizzas with 5 slices in each.

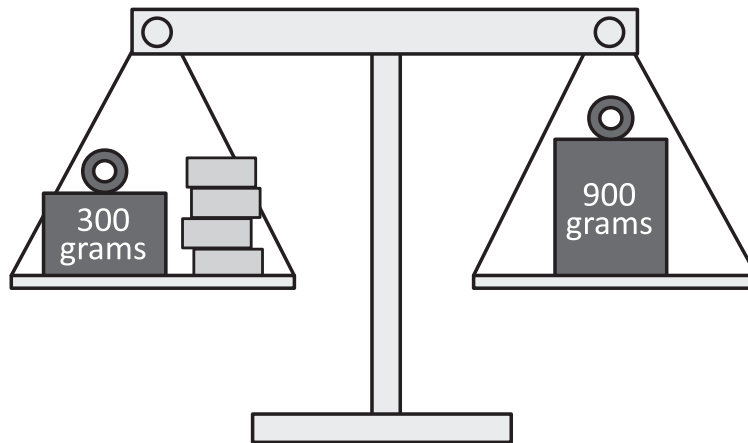


How many samosas do they need?

- 30 40 50 60
-

Shade one bubble.

- 30 Bec has 4 blocks that are all the same weight. She balances them on the scale with 2 weights. Calculate the weight of each block.



- 100 g 150 g 300 g 600 g
-

Shade one bubble.

END OF TEST