

Readiwriter Parent Letter

Readiwriter

Dear Parent or Guardian,

The transition to distance learning is a challenge, but we want you to know you have support.

Your child has take-home access to Readiwriter. Readiwriter is an education program developed hand in hand with teachers across the globe. — they simply sign in with their Readiwriter user-name and password using any compatible computer or mobile device.

We have put together an easy to follow collection of support resources to make using Readiwriter at home as simple as possible for both parents/guardians and your children.

Sign into login.readiwriter.com with your child to start exploring.

To assist you in keeping your child on track we have included the following support documents:

- 1 Student Console Map.
- 2 Top 8 tips on using Readiwriter at home.



Engagement is at the heart of Readiwriter Spelling. The student console puts your child in charge, granting them access to all tools and activities. Activities such as Syllable Sushi, Magic Boxes and Look, Say, Cover, Write, Check are designed to captivate your child's interest, encouraging autonomous learning and discovering the joy of learning.

Student Readiwriter Login:

Fill out your child's login details sent by their teacher.

Username: _____

Password: _____

Sign in at: login.readiwriter.com

Readiwriter Student Console

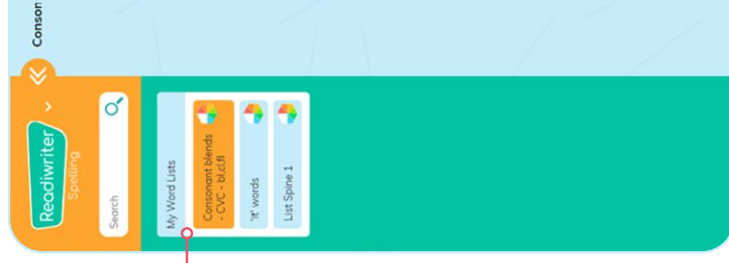
Readiwriter

Spelling

Prepare: Learning Statement – information about the learning intentions, example words and extra information or guidance.

Show: Word Facts – a reference tool that provides detailed information around each word within the selected word list.

Edit – Students can edit their avatar.

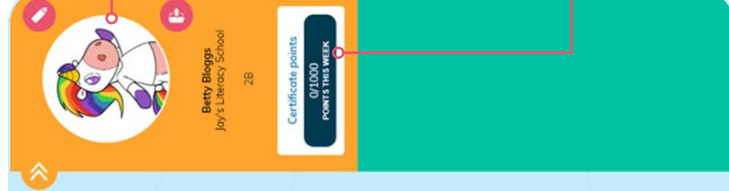


Student word lists
– List of word lists assigned by the teacher. The student selects the word list to work on.

Student avatar – Student's personalised avatar.

Logout – Log out of their student account.

Certificate points – Details points earned in the week. When clicked students can review certificates earned.



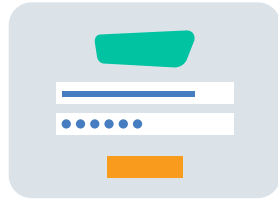
Explore (Magnify): Activities within Explore develop vocabulary knowledge through exploring meanings and contextualising words within a sentence. Enhancing the links between spelling and vocabulary.

Practise (Master): Activities within Practise focus on building a student's lexical store through practise and fluency tasks.

Top 8 Tips for using Radiwriter to support your child's learning at home.

Radiwriter

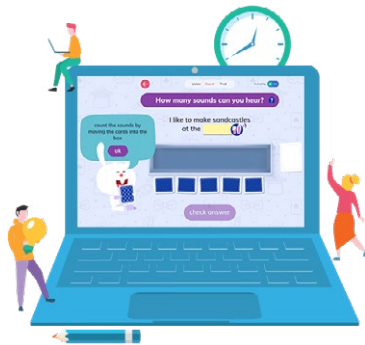
1 Make sure you have your child's Radiwriter user-name and password.



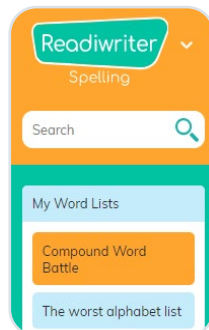
2 You child can access Radiwriter Spelling on any compatible computer or mobile device with Internet access.



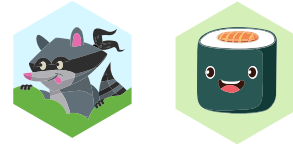
3 Your child's teacher has set them up with the correct curriculum content allowing your child the ability to explore independently, as well as completing any assigned work.



4 Have your child select from 'My Word Lists' on the left hand side of the screen to explore all the tiles on their homepage using different word lists.



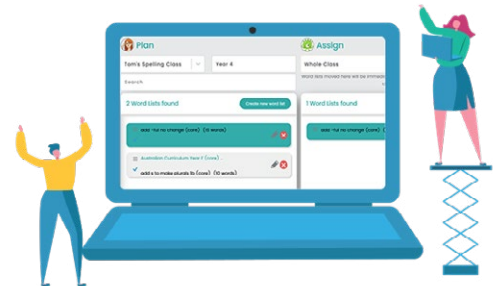
5 Radiwriter Spelling is full of great additional activities that make learning spelling fun. Make sure to check out Syllable Sushi and Picnic Panic!



6 Encourage your child to achieve a weekly certificate, by earning 1000 points or more. You can only achieve 1 certificate each week.



7 Practicing Spelling offline is important too! Check your email for any printable worksheets their teacher has sent home.



8 Celebrate achievements and have fun! Certificates and points can be found on the top right hand corner of the student console under your child's avatar. Let your child get creative by changing up their Avatar, making it as unique as they are!

