

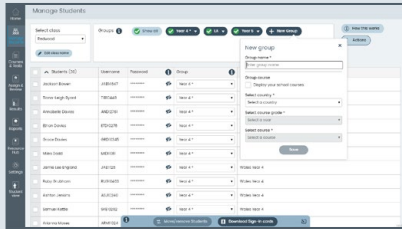
Mathletics

Teacher Console Map

Manage Students



View classes, create groups, assign courses, change curriculum, download sign-in cards and print certificates all on one screen.



Courses



View available curriculum courses, show/hide course topics and modify courses. Assign tests to assess individual student's understanding.

Resources Hub



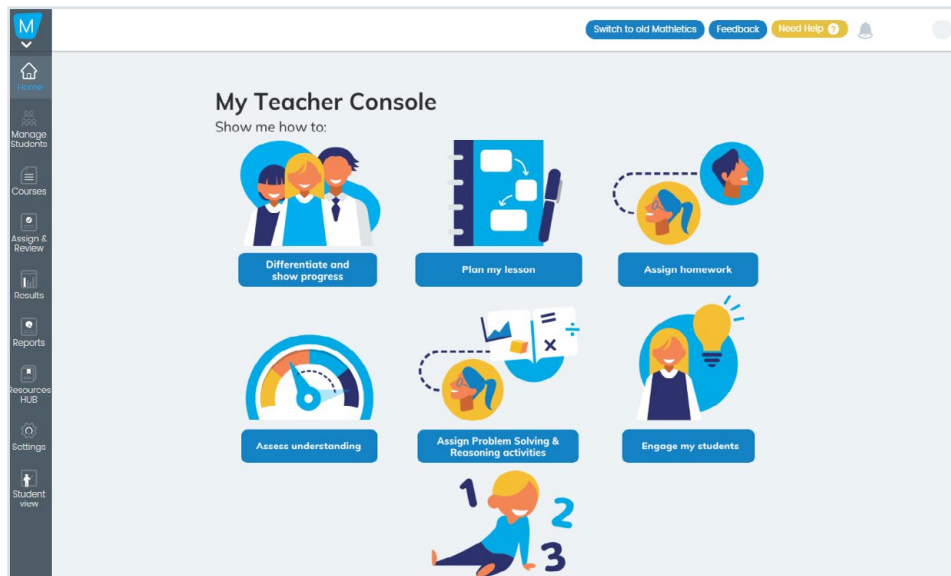
Access over 700 Problem Solving & Reasoning Activities and hundreds of printable eBooks.

Settings



Set Live Mathletics minimum levels for each student.

The simple left-hand navigation menu is designed to make teacher tools easily accessible.



Assign & Review



Preview and assign curriculum and problem solving & reasoning activities.

Show Me How

A step by step guide to your Mathletics features without leaving your console.



Reports



View in-depth achievement, improvement, and usage data at a class and student level.



Student View



Use the student console to attempt curriculum activities with your class, introduce concepts or play one of the engaging mathematical games with your students.

Results



Students are grouped by grade band based on the result of their latest attempt at each activity. View the 10 most recently attempted activities, results by student or results by topic and activity.