

Everyone can do Mathematics

- Teachers assign the appropriate curriculum to students for personalised learning at their own level.
- With hard work and effort, everyone can achieve a weekly certificate.
- Students can access support, use the Mathematics A-Z, and choose activities – giving them ownership of their learning.



Promoting hard work and effort

- Students see their own progress and are encouraged to work on activities they find difficult.
- Students are rewarded with more credits when they improve their scores.
- Teachers can set Live Mathletics levels to challenge students.
- The Hall of Fame celebrates both individual and class effort.



Developing fluency and conceptual understanding

- With the Understanding, Practice and Fluency learning journeys, students follow a series of curriculum-aligned questions that continually adapt to match to their ability.
- Ebooks give teachers a wealth of material to deepen students' understanding.
- Live Mathletics encourages practise to develop fluency in key mathematics facts.



Deepening understanding with explanations

- The 'i' button on activities provides support, guiding students through an example.
- Ability to show working out in problem-solving & reasoning (PSR) activities
- Models and images, such as bar models and arrays, are used within tasks to help develop a deeper understanding.

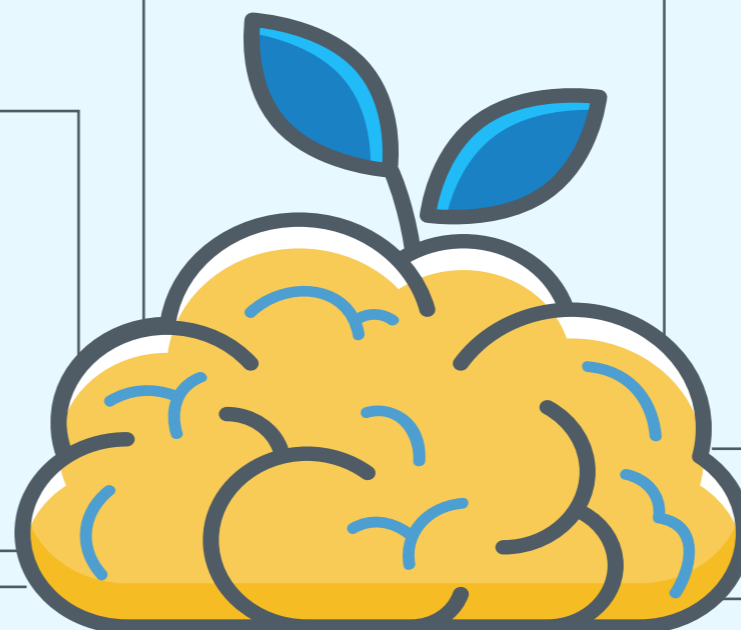


Learning from mistakes

- Students gain immediate feedback and are shown the correct answer when mistakes are made.
- Students can access support in an activity at any time. If they do so after an error, they will be guided through the error.
- Teachers can instantly see student results to identify any areas of weakness, enabling immediate intervention.



Nurture a Growth Mindset with Mathletics



Problem-solving & reasoning

- Problem-solving and reasoning activities are presented in a dedicated modern learning environment, encouraging students to explore and explain their thinking
- PSR topics cover all strands and sub-strands from year 2 to 10.
- Printable ebooks provide additional problem-solving and reasoning resources.



Intelligent practice

- Students enter their Zone of Proximal Development (ZPD) by serving them content at the right level they need to progress.
- Teachers can assign specific tasks that students have to complete before accessing activities of their own choice – a balance between teacher-led and student-led learning.
- The gold star on Live Mathletics encourages students to compete at a challenging level.

Strengths and weaknesses identified

- Teachers can check each student's strengths and weaknesses by topic and activity, helping you find where they need extra support or challenge.
- Teachers can assign tests and get instant results when the test is completed.
- Activities can be assigned to address weaknesses.



Learning key facts

- Building strong foundational skills with Understanding, Practice and Fluency (UPF)
- Live Mathletics encourages students to learn key facts and develop fluency.
- The Mathematics A-Z provides students with resources to help them learn and revise all areas of maths.
- The 'i' button guides students through activities to increase understanding.



Making connections

- A wide range of learning activities, from questions to ebooks and videos, encourage engagement and deeper understanding.
- Complimentary apps, games and videos within Mathletics such as Multiverse, Times Tables Tunes and Rainforest Maths, offer additional ways to learn and enjoy maths.

