




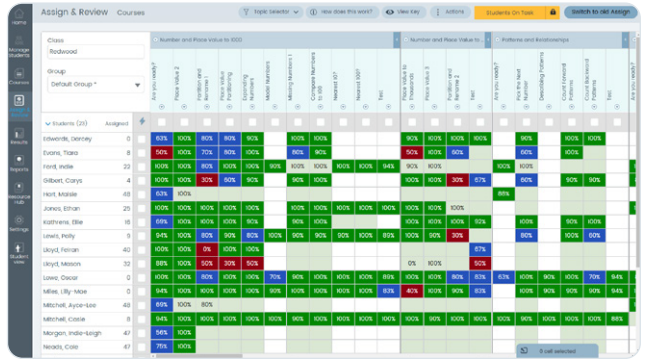
# Quick Guide to Blended Learning with Mathletics

Mathletics

## 1 Flipped Classroom Model of Blended Learning

The flipped classroom model involves introducing concepts and new content online via assigned activities and then practicing them in class with teacher assistance.


- Click **Assign and Review** 
- Click **Courses** 
- Select a topic
- Select an activity/activities
- Click **Assign** 

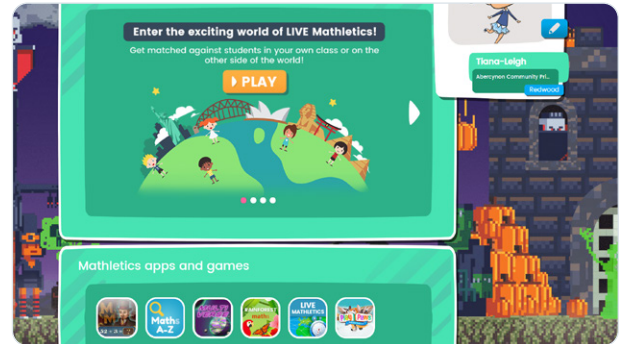


Assign & Review	Course	Topic	Activity	Student 1	Student 2	Student 3	Student 4	Student 5	Student 6	Student 7	Student 8	Student 9	Student 10
Number and Place Value for 1000	1000	Place Value 1	Place Value 2	Place Value 3	Place Value 4	Place Value 5	Place Value 6	Place Value 7	Place Value 8	Place Value 9	Place Value 10	Place Value 11	Place Value 12
Number and Place Value for 100	1000	Place Value 1	Place Value 2	Place Value 3	Place Value 4	Place Value 5	Place Value 6	Place Value 7	Place Value 8	Place Value 9	Place Value 10	Place Value 11	Place Value 12
Ordering Numbers	1000	Ordering Numbers 1	Ordering Numbers 2	Ordering Numbers 3	Ordering Numbers 4	Ordering Numbers 5	Ordering Numbers 6	Ordering Numbers 7	Ordering Numbers 8	Ordering Numbers 9	Ordering Numbers 10	Ordering Numbers 11	Ordering Numbers 12
1000s, 1000s, 1000s, 1000s	1000	1000s, 1000s, 1000s, 1000s	1000s, 1000s, 1000s, 1000s	1000s, 1000s, 1000s, 1000s	1000s, 1000s, 1000s, 1000s	1000s, 1000s, 1000s, 1000s	1000s, 1000s, 1000s, 1000s	1000s, 1000s, 1000s, 1000s	1000s, 1000s, 1000s, 1000s	1000s, 1000s, 1000s, 1000s	1000s, 1000s, 1000s, 1000s	1000s, 1000s, 1000s, 1000s	1000s, 1000s, 1000s, 1000s

## 2 Station Rotation Model of Blended Learning


The station rotation model of blended learning involves students rotating through different learning stations in class.

- Students login
- Click **Play** 
- Select **Live Mathletics, Multiverse, Rainforest Maths**, or any of the additional games
- Learn through Play



## 3 Use videos to help incorporate digital learning into the classroom

A fantastic way to do blended learning is to incorporate videos. [Here's an example video](#). You can play any video you choose to the class. Mathletics also has a huge range of videos for different topics.

- Sign into teacher console
- Access the **Student view** version 
- Select **Explore** and then the videos tab
- Play video for the entire class
- Discuss the video and answer questions as a class
- Breakaway into small groups or as individuals to practice

