




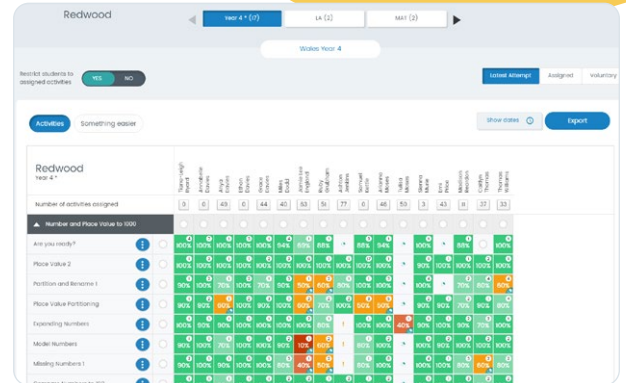
# Quick Guide to Blended Learning with Mathletics

Mathletics

## 1 Flipped Classroom Model of Blended Learning

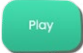
The flipped classroom model involves introducing concepts and new content online via assigned activities and then practicing them in class with teacher assistance.

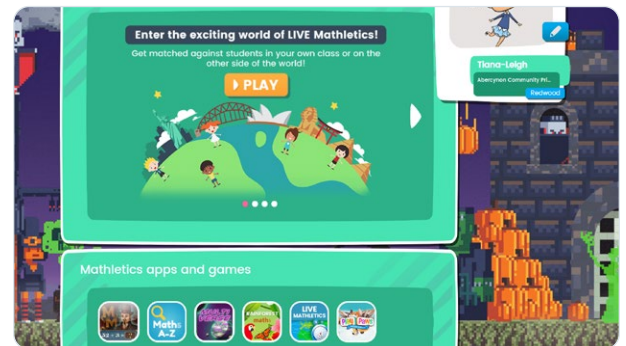
- Click **Assign and Review** 
- Click **Courses** 
- Select a topic
- Select an activity/activities
- Click **Assign** 



## 2 Station Rotation Model of Blended Learning

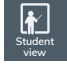
The station rotation model of blended learning involves students rotating through different learning stations in class.

- Students login
- Click **Play** 
- Select **Live Mathematics, Multiverse, Rainforest Maths**, or any of the additional games
- Learn through Play



## 3 Use videos to help incorporate digital learning into the classroom

A fantastic way to do blended learning is to incorporate videos. [Here's an example video.](#) You can play any video you choose to the class. Mathletics also has a huge range of videos for different topics.

- Sign into teacher console
- Access the **Student view** version 
- Select **Explore** and then the videos tab
- Play video for the entire class
- Discuss the video and answer questions as a class
- Breakaway into small groups or as individuals to practice

