




Quick Guide to Blended Learning with Mathletics

Mathletics

1 Flipped Classroom Model of Blended Learning

The flipped classroom model involves introducing concepts and new content online via assigned activities and then practicing them in class with teacher assistance.


- Click **Assign and Review** 
- Click **Courses** 
- Select a topic
- Select an activity/activities
- Click **Assign** 

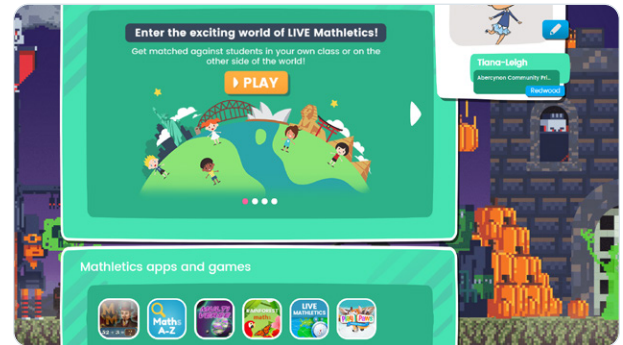


Class	Number and Place Value to 1000	Number and Place Value to 10000	Patterns and Relationships
Edwards, Leacey	100%	100%	100%
Evans, Tracy	80%	75%	100%
Evans, India	100%	100%	100%
Edwards, Corey	100%	100%	100%
Holt, Middle	100%	100%	100%
Jones, Ethan	100%	100%	100%
Kathens, Ellie	100%	100%	100%
Lowell, Polly	100%	100%	100%
Moyle, Fernan	100%	100%	100%
Moyle, Melson	100%	100%	100%
Lowell, Oscar	100%	100%	100%
Miles, Lily-Mae	100%	100%	100%
Mitchell, Aya-Lee	100%	100%	100%
Mitchell, Cassie	100%	100%	100%
Morgan, India-Leigh	100%	100%	100%
Neville, Cole	100%	100%	100%

2 Station Rotation Model of Blended Learning


The station rotation model of blended learning involves students rotating through different learning stations in class.

- Students login
- Click **Play** 
- Select **Live Mathletics, Multiverse, Rainforest Maths**, or any of the additional games
- Learn through Play



3 Use videos to help incorporate digital learning into the classroom

A fantastic way to do blended learning is to incorporate videos. [Here's an example video.](#) You can play any video you choose to the class. Mathletics also has a huge range of videos for different topics.

- Sign into teacher console
- Access the **Student view** version 
- Select **Explore** and then the videos tab
- Play video for the entire class
- Discuss the video and answer questions as a class
- Breakaway into small groups or as individuals to practice

